

QuickComb Kit for Corn Bulk Grain

QuickGuide

Sample Preparation



1. Determine sample weight for the number of kernels tested



2. Grind with Bunn Grinder



Or, use an alternate method of grinding

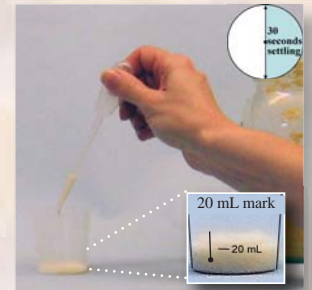
Test Procedure



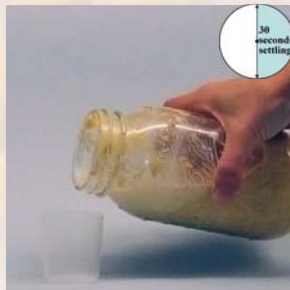
1. Measure and add water to jar or bag



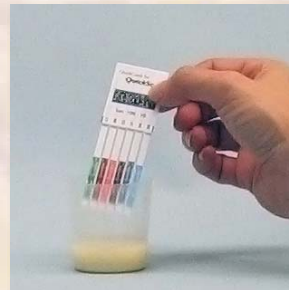
2. Seal container, shake to wet entire sample, settle 30 seconds



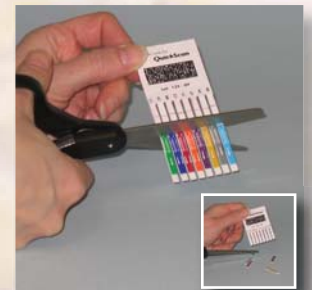
3. Pipette into cup to 20 mL line; settle 30 seconds



4. Alternatively, pour from jar or bag to the 20 mL line; settle 30 seconds



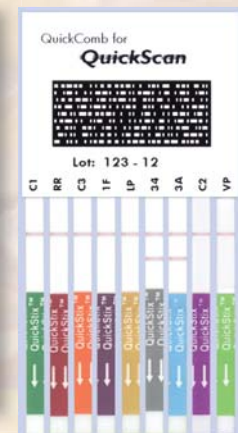
5. Insert comb into cup with arrows pointing down; wait 5 minutes



6. To retain results, cut off tailpads. For QuickScan, cut tailpads & scan immediately

Test Interpretation

Protein/Trade Name	Sensitivity
Cry1Ab/Bt11, YieldGard Corn Borer	0.8% (~6 kernels in 800)
Event 603/Roundup Ready	0.5% (4 kernels in 800)
Cry3Bb/YieldGard Rootworm	0.5% (4 kernels in 800)
Cry1F/Herculex I	0.5% (4 kernels in 800)
T25/Liberty Link	0.5% (4 kernels in 800)
Cry34/Herculex RW	0.5% (4 kernels in 800)
mCry3A/Agrisure RW	0.9% (~8 kernels in 800)
Cry2A/in SmartStax (MON98034)	0.9% (~8 kernels in 800)
Vip3A/Viptera	0.25% (2 kernels in 800)



If two lines form, the sample is **positive**

Control Lines always need to be present